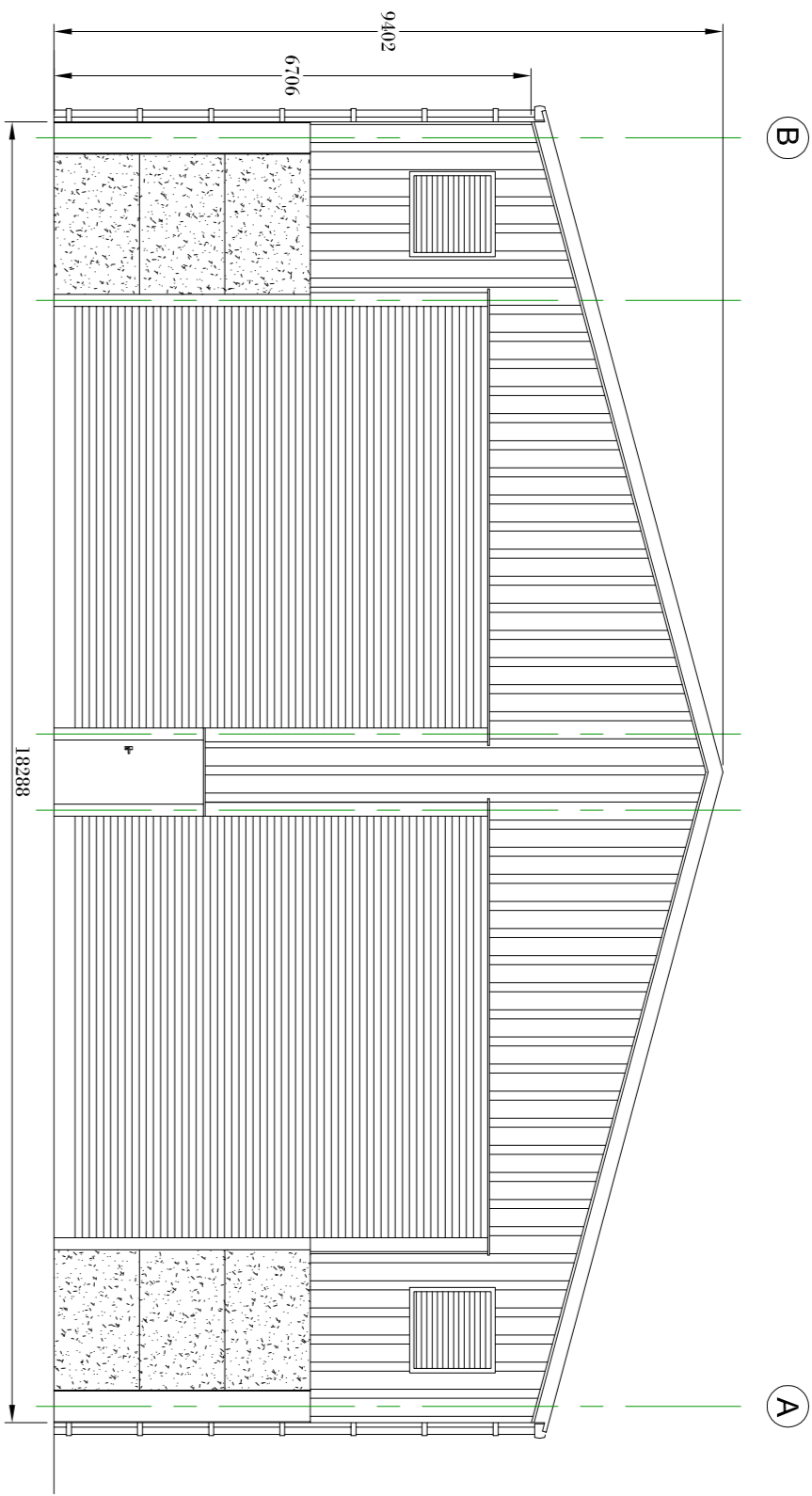
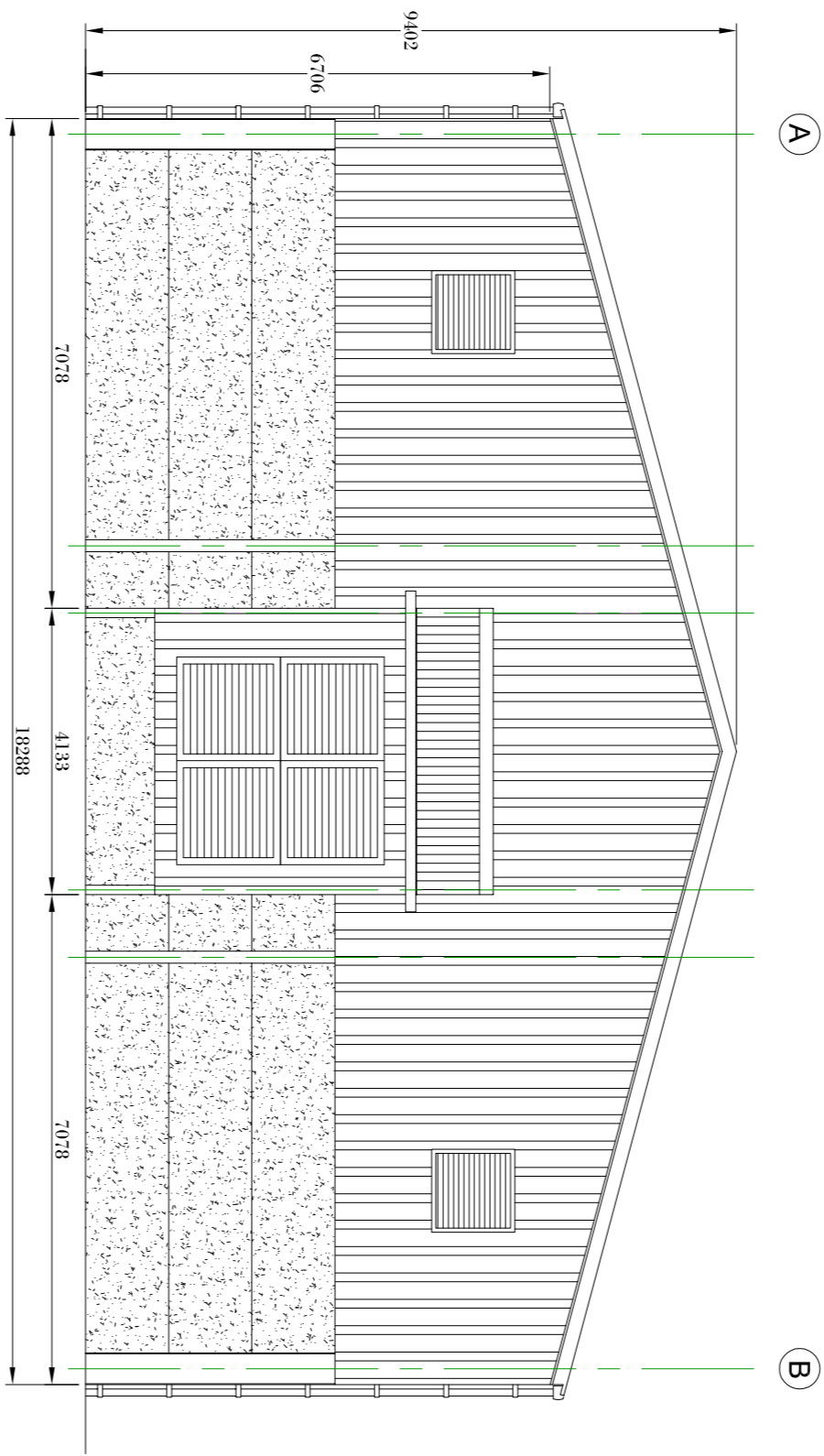


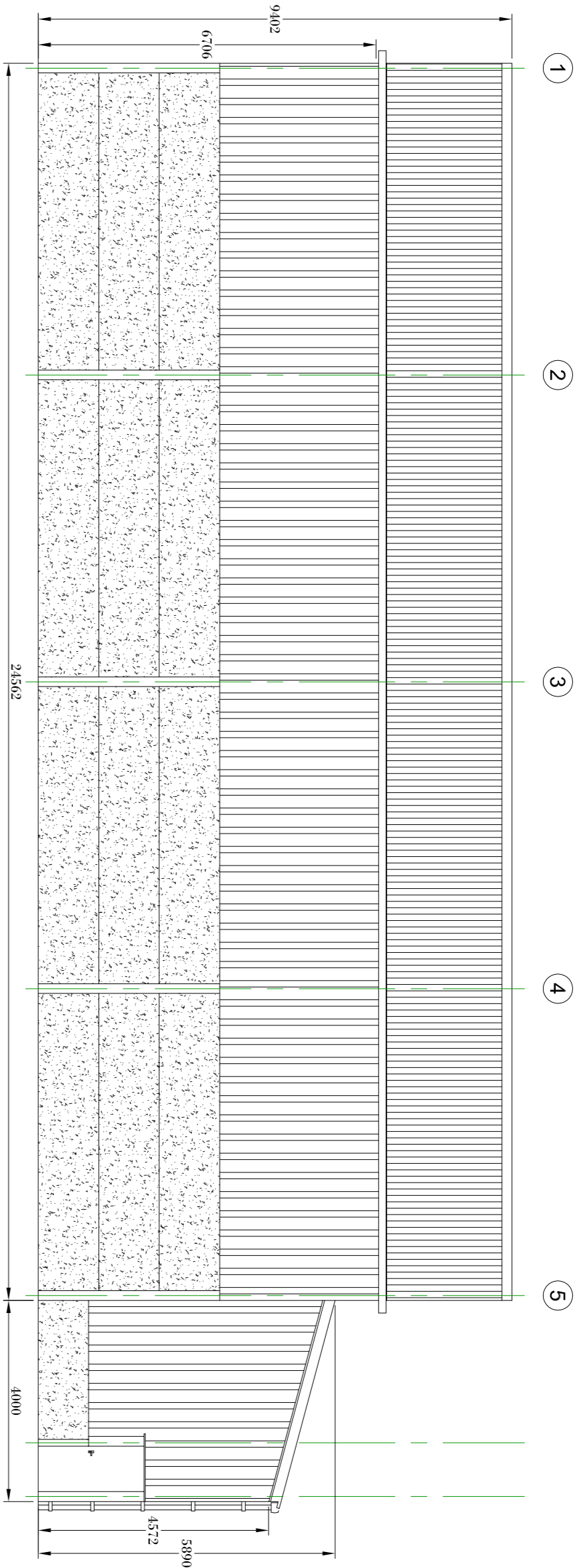
End Elevation (1)



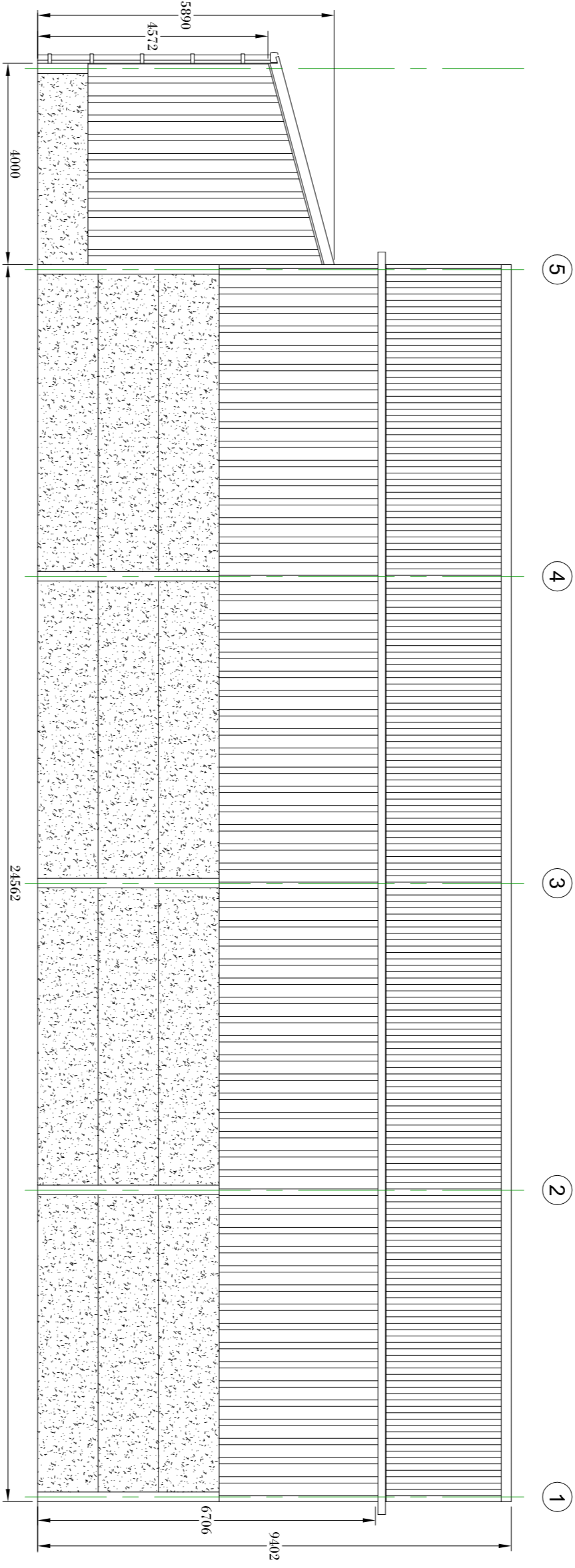
End Elevation (5)



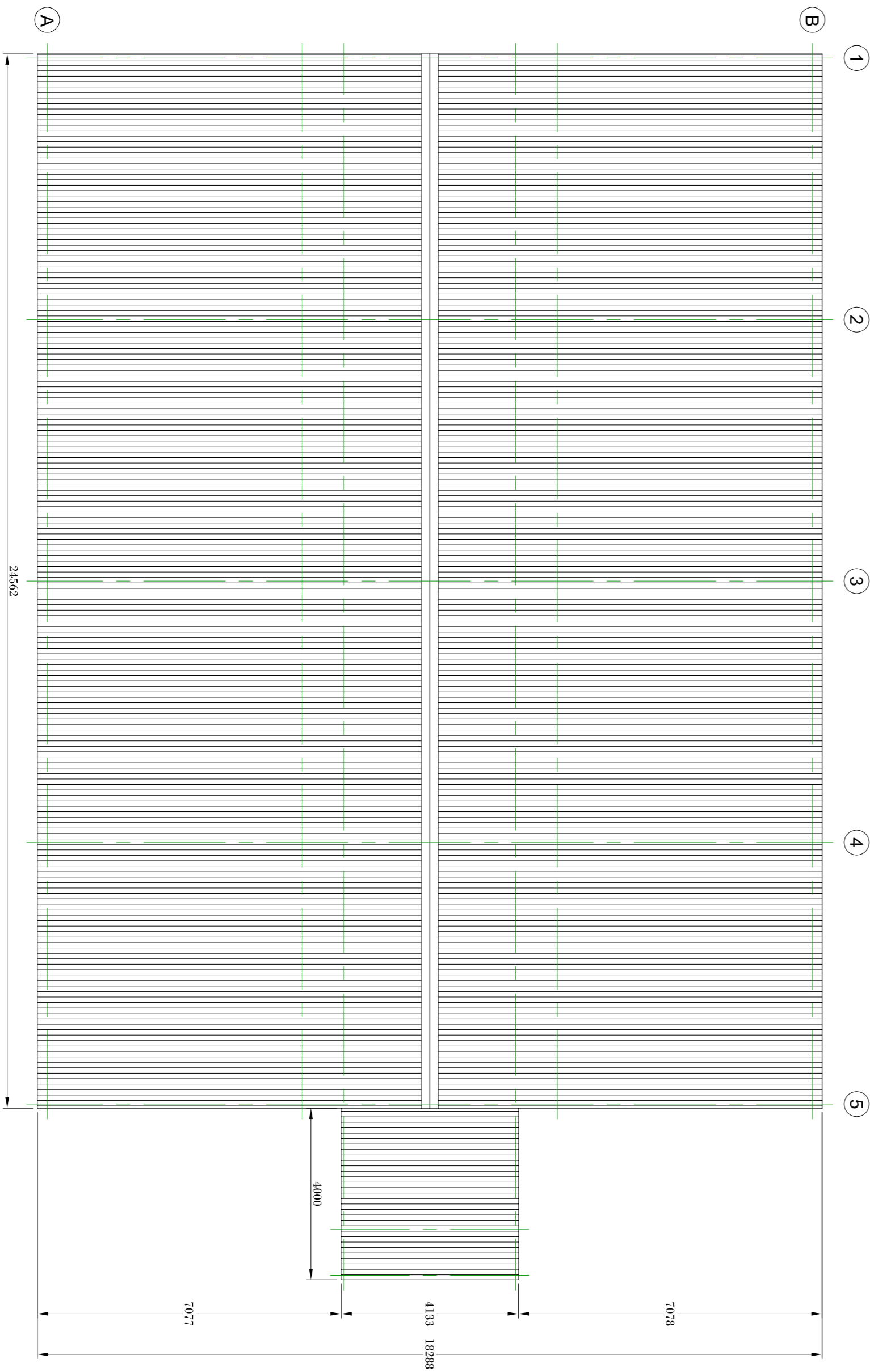
Side Elevation (A)



Side Elevation (A)



Plan View



**Specification - Main Building**  
Size: 21,381m x 18,288m x 6,706m on a 15° Pitch  
**Roof Cladding**  
Purlins: 177/16 Galvanneal Steel Zed  
Leaves Beams: 100/20 Galvanneal Steel  
Clad with Profile 6R Pipe Cement Sheets  
Rainwater System  
Both sides of building to have 'Trimline guttering  
with 250 x 100 black PVC downpipes  
**Site & End Cladding**  
Both Cable Ends and Sides to be clad 3,206m below eaves with  
32/1000 box profile sheets  
**Concrete Panels**  
Both Sides and Cable Ends to have 100mm thick pre-stressed  
concrete panels to a height of 3.6m  
230 x 606m x 6,066m Profile Square Door, 1 located in Cable End 1  
1 No 0.900m x 2.100m Personnel Door, Located external to Cable End 1  
Louvers  
4 No Louver Vents (2 No Per Cable End)  
Specification - Lean - To (Attached to Cable End 2)  
Size: 4m x 4m x 4.522m on a 15° Pitch  
**Roof Cladding**  
Purlins: 177/16 Galvanneal Steel Zed  
Leaves Beams: 100/20 Galvanneal Steel  
Clad with Profile 6R Pipe Cement Sheets  
Rainwater System  
Side 1 of building to have 'Trimline guttering  
with 250 x 100 black PVC downpipes  
**Site & End Cladding**  
Both Cable Ends and Sides to be clad 3,672m below eaves with  
32/1000 box profile sheets  
**Concrete Panels**  
Both Sides and Cable Ends to have 100mm thick pre-stressed  
concrete panels to a height of 1m  
Door  
1 No 0.900m x 2.100m Personnel Door, Located in Cable End 1  
Louvers  
4 No Louver Vents in Side 1

Client:		Mr Edward Cadden
Address:		16, Highways Ltd 133400 079782045
Project:		Bridgewater Construction Unit 30 10, Highways Ltd Market Division 779 21U 741-01638 80909
Spec:		100 x 60 x 22 x 137 x 137
Drawn By:		JB
Date:		20/02/23
Scale:		1:100